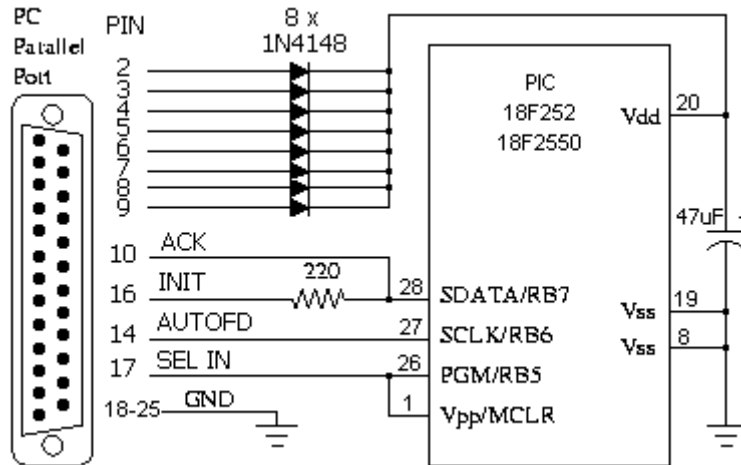


ART2003 PIC18Fxxxx Programmer

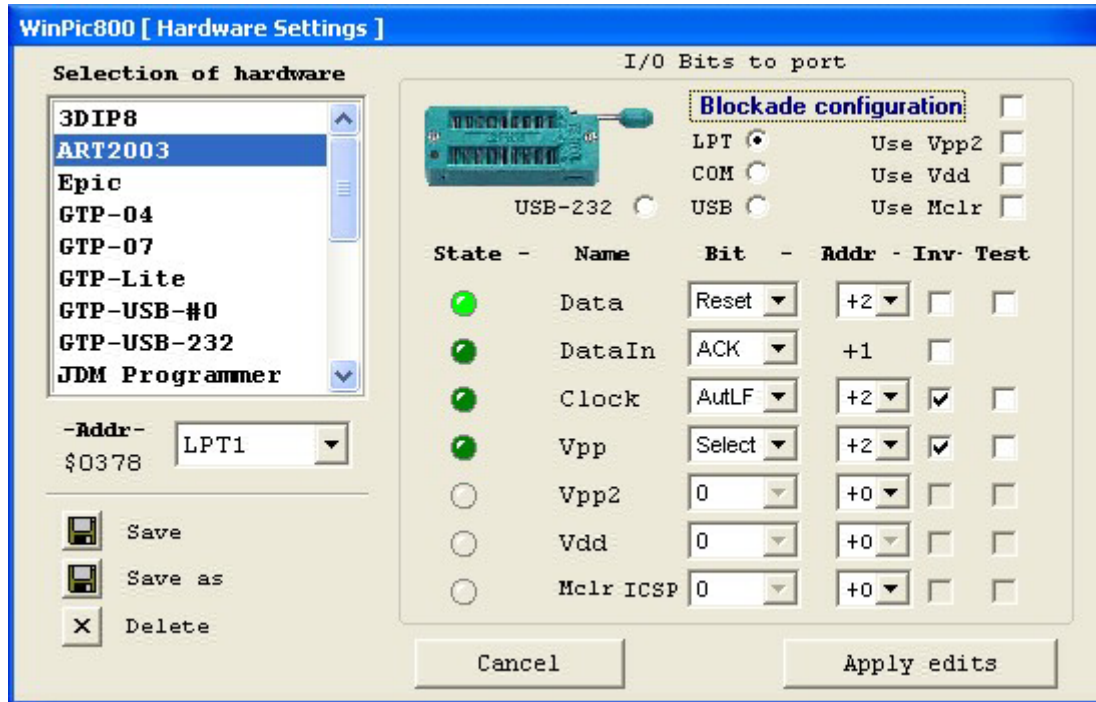


ATTENTION

This programmer require no external power and it works in LVP mode, it means that VPP is 5V instead of 13V. Because that you have to select LVP in FUSES section.

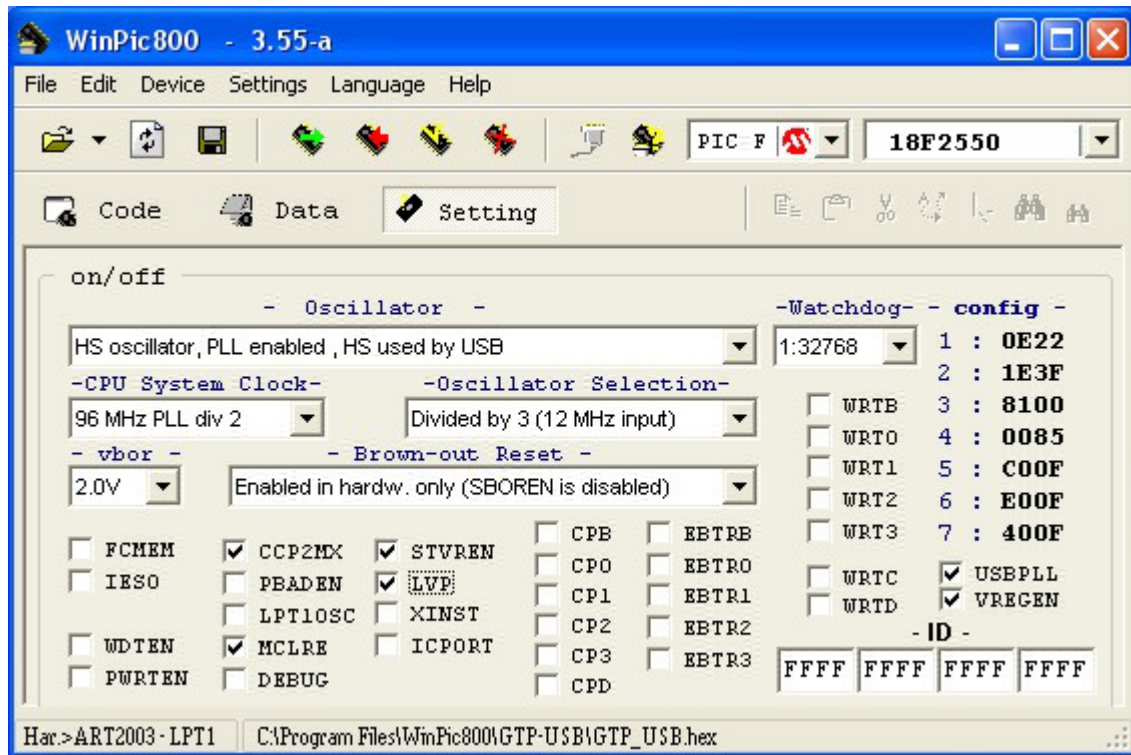
(See next pictures)

Hardware configuration in WinPic800



Also you can use ART2003 hardware config file

LVP selection in FUSES section



Because it works in LVP mode, you must select always LVP or you will get errors during programation