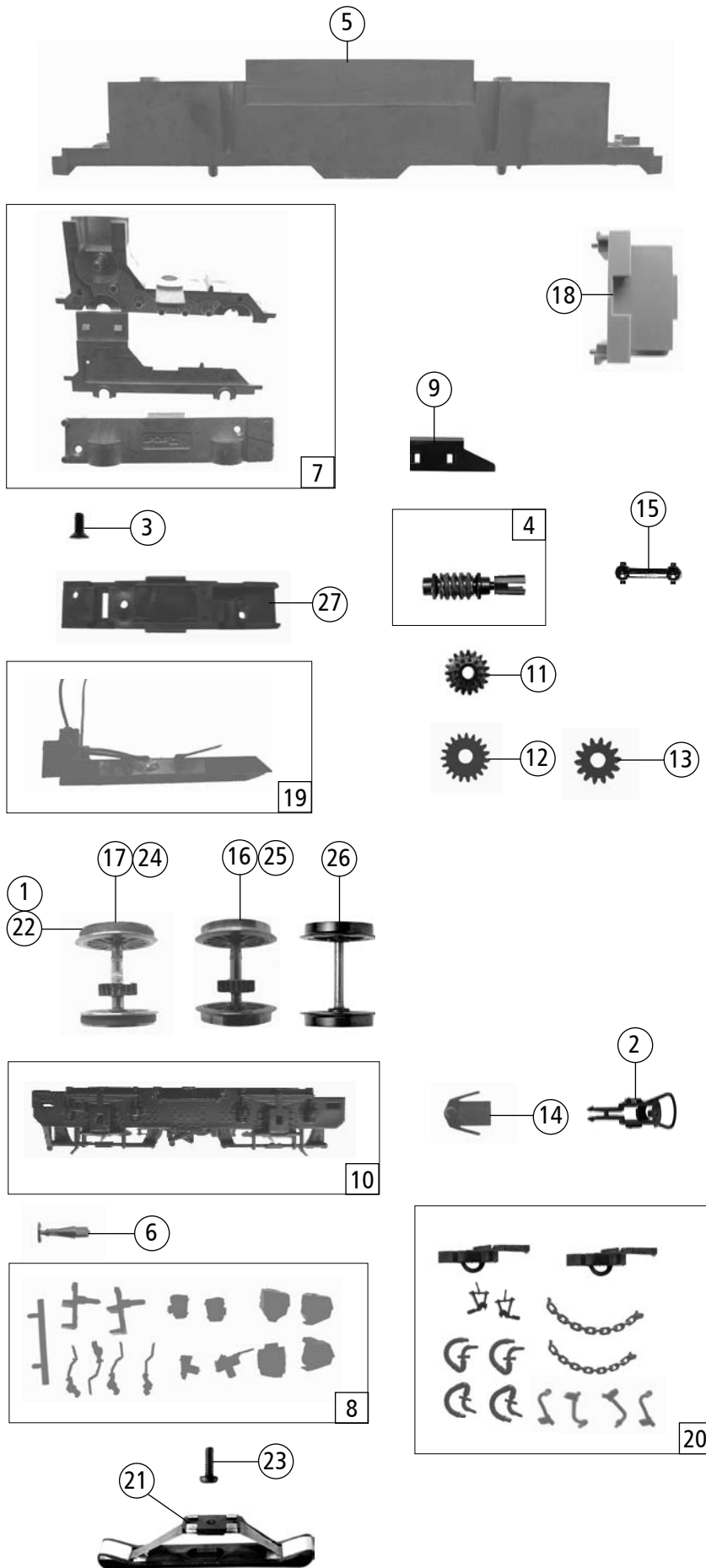


| Pos. Nr. Pos.no. | Beschreibung Description | Art.-Nr. Art.no. | Preisgruppe Price bracket |
|--------------------------|---|---------------------|------------------------------|
| 63810 | E 1000 Ripoll | | |
| 63811 | | | 🔊 |
| 69811 | | ? | 🔊 |
| 1 | Motor komplett Motor assembly | 85127 | 57 |
| 2 | Stromabnehmer Pantograph | 85457 | 39 |
| 3 | Kardanschale kurz 1,5 mm Cardan bearing short 1,5 mm | 87129 | 3 |
| 4 | Schraube M2.0x4 Screw M2.0x4 | 121568 | 2 |
| 5 | Brückenstecker mit Kondensator Bridge connector with kondensator | 125666 | 12 |
| 6 | Gehäuse komplett Betr. Nr. E 1002 Bpdy assembly loco no. E 1002 | 125768 | 75 |
| 7 | TS - Gehäuse Part set for body | 125773 | 16 |
| 8 | Dachleitung Roof wire | 125776 | 5 |
| 9 | TS - Gehäuse Part set for body | 125795 | 10 |
| 10 | Stromabnehmerisolator Insolator for pantograph | 125803 | 2 |
| 11 | Fenstersatz Part set window | 125804 | 10 |
| 12 | Griffstangensatz Part set handrails | 125805 | 12 |
| 13 | Treppe vorne Steps front | 125806 | 3 |
| 14 | Platine kpl. mit LED Platinen Printed circuit assembly | 125809 | 55 |
| 15 | Oberleitungskontakt o. Abb. Overhead contact line no ill. | 125812 | 6 |
| 16 | Lampenkontakt Lamps contact | 125824 | 3 |
| 17 | Schraube M1.4x2.5 Screw M1.4x2.5 | 125825 | 2 |
| 18 | Nummertafelsatz Number board set | 125826 | 20 |
| 19 | Lampe mit Glas oben Lamps with glass above | 125827 | 20 |
| 20 | Lampe mit Glas unten Lamps with glass down | 125828 | 7 |
| 21 | Schraube M1.4X4 Screw M1.4X4 | 125836 | 2 |
| 22 | Motorkontakt Motor pck up | 125837 | 2 |
| 23 | Motordistanzplatte Motor spacer | 125842 | 2 |
| Sound 63811/68811 | | | |
| 24 | Sounddecoder Version 3.5 o. Abb. Sounddecoder Version 3.5 no ill. | 121800 | 80 |
| 25 | Schraube 1.7x5 Screw 1.7x5 | 125800 | 2 |
| 26 | Lautsprecher D=20 - 100 Ohm o. Abb. Loud speaker D=20 - 100 Ohm no ill . | 124776 | 30 |
| 27 | Lautsprechergehäuse für D=20 Loud speaker body für D=20 | 125398 | 3 |

Änderungen in Konstruktion und Ausführung vorbehalten
We reserve the right to change the construction and specification



| Pos. Nr. Pos. no. | Beschreibung Description | Art.-Nr. Art. no. | Preisgruppe Price bracket |
|-------------------------------|---|----------------------|------------------------------|
| 63810 | E 1000 Ripoll | | |
| 63811 | | | ☞ |
| 69811 | | ~ | ☞ |
| 1 | Hafringsatz 10Stk. 14,7-16,5mm Set with traction tires 10 pieces 14,7-16,5mm | 40071 | --- |
| 2 | Standardkupplung komplett Standard coupling assembly | 89246 | 5 |
| 3 | Schraube 1.7x5 Screw 1.7x5 | 122969 | 2 |
| 4 | Schneckensatz komplett Worm set | 125765 | 24 |
| 5 | Lokrahmen Loco frame | 125767 | 32 |
| 6 | Puffer Baffleer | 125772 | 2 |
| 7 | TS - Getriebe 3-tlg Gear parts set | 125774 | 24 |
| 8 | TS - Blendensteckteile Part set for bogie | 125775 | 16 |
| 9 | Schneckendeckel Worm cover | 125796 | 4 |
| 10 | Blende Bogie | 125797 | 14 |
| 11 | Schneckenrad 19T/10T Worm gear 19T/10T | 125798 | 3 |
| 12 | Zahnrad 20T Gear 20T | 125799 | 3 |
| 13 | Zahnrad 14T Gear 14T | 125801 | 3 |
| 14 | Kupplungskammer Coupler holder | 125802 | 3 |
| 15 | Kardanwelle Cardan shaft | 125807 | 3 |
| 16 | Radsatz m. Zahnrad o. Hafring Wheelset with gear without traction tires | 125810 | 18 |
| 17 | Radsatz m. Hafringen+Zahnrad Wheelset with gear with traction tires | 125811 | 20 |
| 18 | Inneneinrichtung Interior | 125829 | 5 |
| 19 | Kontaktalter mit Kontakten Wheel contact holder with contacts ass. | 125832 | 12 |
| 20 | Zurüstbeutel Bag with accessories | 125833 | 18 |
| AC -Wechselstrom 68811 | | | |
| 21 | Schleifer 42 mm Collector 42 mm | 86030 | --- |
| 22 | Hafrings.10Stk.15,4-17,5mm Set with traction tires 10 pieces 15,4-17,5mm | 40076 | --- |
| 23 | Schraube 1.7x5 Screw 1.7x5 | 125800 | 2 |
| 24 | Radsatz m. Hafringen m. Zahnrad Wheelset with gear with traction tires | 125813 | 20 |
| 25 | Radsatz m. Zahnrad o. Hafringen Wheelset with gear without traction tires | 125814 | 18 |
| 26 | Radsatz o. Zahnrad o. Hafringen Wheelset without gear without traction tires | 125815 | 16 |
| 27 | Getriebeboden AC Gear bottom AC | 125818 | 10 |

Ersatzteile erhalten Sie bei Ihrem Fachhändler, oder Ihrer Landesvertretung:
You can order your Replacement Parts at your local dealer, your country representative: